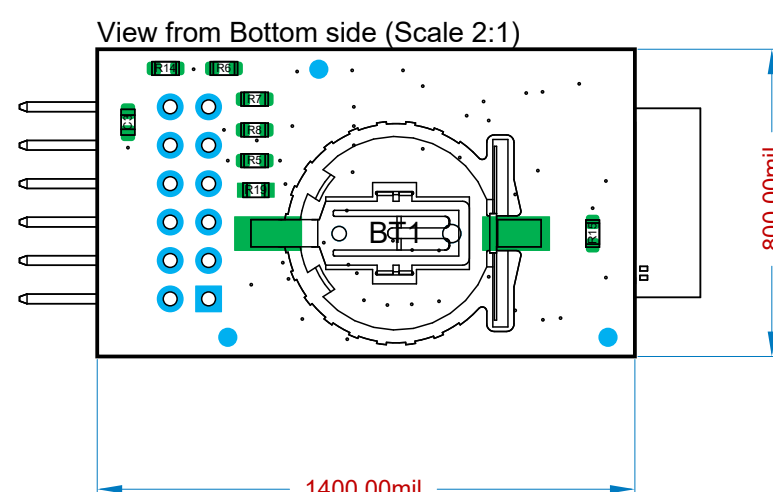
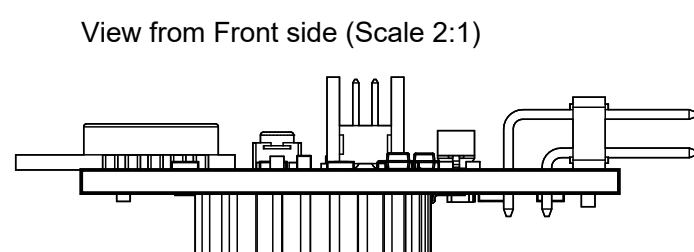
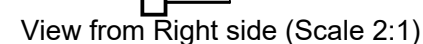
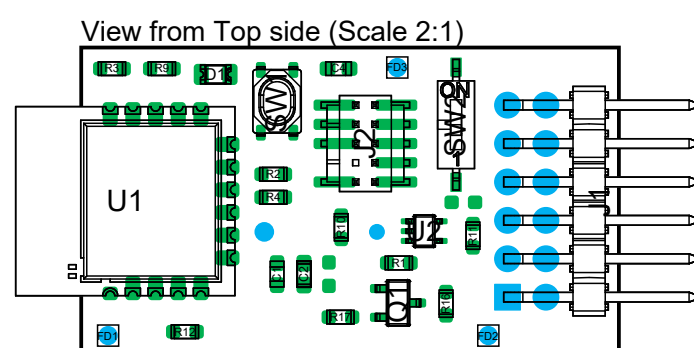



Assembly Notes

1. Assemble to J-STD-001.
Workmanship and inspection to IPC-A-610 Class 2.
2. All assembly materials must be RoHS compliant.
(RoHS 3, EU Directive 2015/863)
3. PCB shall comply with IPC-5704 cleanliness requirements.
4. Parts identification is described in parts list BOM.
Parts not to be populated are called out as DNP in parts list BOM.
5. Assembly type: Mixed
Single-sided through hole plus single-sided surface mount.
6. These assemblies are ESD sensitive.
ESD precautions must be observed.
7. These assemblies must be clean and free of flux and all contaminants.
Use of no-clean flux is unacceptable.



THE INFORMATION CONTAINED IN THIS DRAWING IS THE SOLE PROPERTY OF RENESAS. ANY REPRODUCTION IN PART OR AS A WHOLE WITHOUT THE WRITTEN PERMISSION OF RENESAS IS PROHIBITED.

PROPRIETARY AND CONFIDENTIAL

UNLESS OTHERWISE SPECIFIED:		NAME	DATE		
DIMENSIONS ARE METRIC TOLERANCES:		DRAWN	HVR	4/16/2024	
FRACTIONAL ±		CHECKED	KK		710 Slater Rd Morrisville
ANGULAR: MACH ± BEND ±		ENG APPR.			Suite 200 NC 27560
TWO PLACE DECIMAL ±		MFG APPR.			
THREE PLACE DECIMAL ±					
INTERPRET GEOMETRIC TOLERANCING PER:		Q.A.			TITLE
MATERIAL		COMMENTS:			Low Power Bluetooth PMOD
FINISH					
DO NOT SCALE DRAWING		SIZE		DWG. NO.	REVISION
		C		DA14531 PMOD	C
		SCALE: 1:1		SHEET 1 OF 1	